

MOVING IMAGE TECHNOLOGIES

R000212 INSTRUCTIONS ALMS20L SIMPLE GUI PC UTILITY Version: 2019-11-12

1. Scope

This utility is a software program the user may run on a PC or laptop, allowing them to alter the basic dimming values currently programmed into the MiT ALMS20L dimmer. It allows the user to change the dimming settings in a similar way they would be able to by using the full Graphical User Interface (GUI) that resides within the ALMS20L.

Why this program? The full GUI contained within the ALMS20L operating system is very processor-intensive. When using the built-in GUI, flickering can occur on one or more dimmer outputs when the processor resources become overtaxed, because of the processor trying to service the GUI at the same time it is controlling lighting. This Simple GUI program transfers the bulk of the GUI processing from the ALMS20L to the PC or laptop. If an audience isn't present, or if you don't care about spurious flashes from the lights, you don't need to use this program. But if you need to make changes to the dimmer settings with an audience, or especially VIPs present, using this program to make the needed changes will avoid flashing from the lights.

Note: This utility software works only with ALMS20L units with firmware 1.3 or higher.

MOVING IMAGE TECHNOLOGIES

Firmware 1.3 Web 1.2

ALMS20L Auditorium1

If your ALMS20L is running an older version of firmware you must update it, following the procedure given in the ALMS20L user manual, before attempting to use this program.

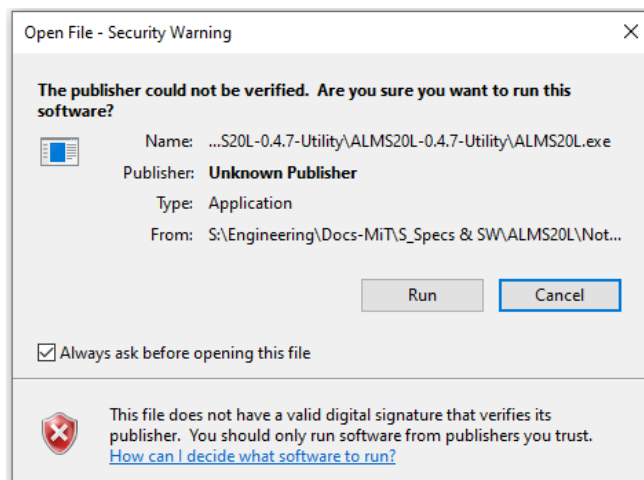
2. Procedure

If you don't already have the Simple GUI program it may be downloaded from our website as a zip file and unzipped to your PC or laptop. It may be found at this URL:

<http://www.movingimagedtech.com/wp-content/uploads/2019/11/ALMS20L-0.4.7-Utility.zip>

After unzipping the folder, connect your computer to the ALMS20L with an Ethernet cable.

Double click *ALMS20L* file inside the unzipped folder. You will get the following security warning:



Click “Run” and you will see the following blank sheet.

ALMS20L Tool Version 2019-10-22

Device Connection

Connect 192.168.10.31 ...

Scene Controls

Activate	Name	CH1.AC	CH1.DC	CH2.AC	CH2.DC	Time
Scene 1
Scene 2
Scene 3
Scene 4
Scene 5
Scene 6

Now type in the IP address of the unit you are connected to and click Connect, the program will upload all the current information from the unit and populate the screen, see example below (your dimming values may be different depending on how the unit is programmed).

ALMS20L Tool Version 2019-10-22

Device Connection

Connect 192.168.10.31 Auditorium1

Scene Controls

Activate	Name	CH1.AC	CH1.DC	CH2.AC	CH2.DC	Time
Scene 1	Cleaning	100	100	100	100	5
Scene 2	Intermission	60	60	60	60	10
Scene 3	Trailers	60	60	0	0	10
Scene 4	Feature	0	0	0	0	10
Scene 5	Credits	50	50	0	0	10
Scene 6	Scene	0	0	0	0	10

By clicking any of the Scene buttons, the dimmer will ramp to the value indicated for that scene.

Changing a value will change the color of the box to yellow and the corresponding scene button to “SAVE”, prompting you to save the new value.

ALMS20L Tool Version 2019-10-22

Device Connection

Connect 192.168.10.31 Auditorium1

Scene Controls

Activate	Name	CH1.AC	CH1.DC	CH2.AC	CH2.DC	Time
Scene 1	Cleaning	100	100	100	100	5
Scene 2	Intermission	60	60	60	60	10
Scene 3	Trailers	60	60	0	0	10
SAVE	Feature	0	0	0	0	5
SAVE	Credits	50	50	5	0	10
Scene 6	Scene	0	0	0	0	10

Click the relevant “SAVE” buttons and the new values will be downloaded and saved to the unit, and the button will return to normal.

ALMS20L Tool

Version 2019-10-22

Connect

192.168.10.31

Auditorium1

Scene Controls

Activate	Name	CH1.AC	CH1.DC	CH2.AC	CH2.DC	Time
Scene 1	Cleaning	100	100	100	100	5
Scene 2	Intermission	60	60	60	60	10
Scene 3	Trailers	60	60	0	0	10
Scene 4	Feature	0	0	0	0	5
Scene 5	Credits	50	50	5	0	10
Scene 6	Scene	0	0	0	0	10

This concludes the instructions on using the ALMS20L PC Utility Simple GUI.