



MOVING IMAGE TECHNOLOGIES

TECH NOTE R0000192 JNT Processor Update Procedure

Version: 2019-03-11

1. Scope

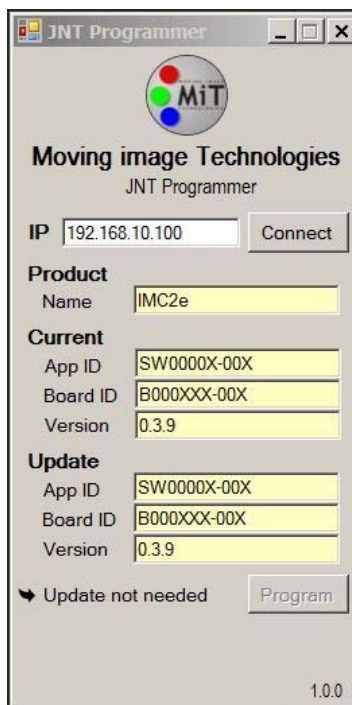
MiT uses a common hardware platform in all of our microprocessor-based products we call the JNT platform. This includes the IMC2 and IMC3 series automations, IS-20 Power Manager, and ALMS24 and ALMS20L lighting control products (and others to come). These products may have their firmware upgraded in the field by following this procedure.

2. Procedure

You will require the update data file. This will normally be in the form of a .zip file that contains all the files needed for the update. It will usually be sent along with this document.

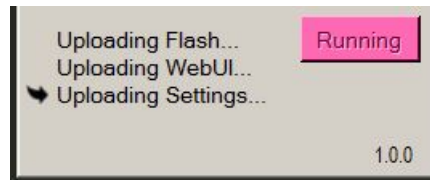
Once you have saved the update file to your PC, here is how to use it:

- 1) Unzip or extract the update zip file to obtain the “JntGui.exe” file and the “JntGui” folder.
- 2) Connect your PC to the JNT-based MiT product using an Ethernet cable.*
- 3) Make sure you are able to ping your JNT device from the PC (from a DOS / CMD prompt, type PING xxx.xxx.xxx.xxx where the x’s are the IP address for the MiT product. If you don’t get a response you won’t be able to continue).
- 4) Double-click on “JntGui.exe” and type in the IP address of the device to update.
- 5) Click Connect The image below shows parameters loaded from our device after pressing the Connect button.



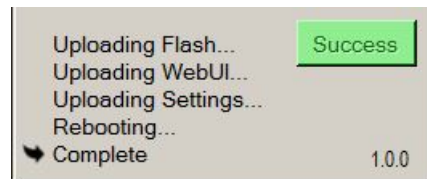
If the parameters are correct, the Program button should be enabled automatically. If not, error messages will be shown.

- 6) Click the Program button to start the update. You should see the status text slowly change. First it should appear like the following:



Note: Make sure you don't interrupt the power to the device while the update is in process as it could corrupt system memory.

- 7) When the firmware is completed loading it should look like the following:



- 8) It is safe to turn off the power once the process is shown complete, although you should not need to cycle the power on the device for the updated firmware to take effect.

This completes the JNT update procedure.

Notes:

*It's recommended to connect directly from your PC to the device being updated, rather than doing it through a network connection. This will ensure you aren't accidentally communicating with an unintended device. It may require a network crossover cable to connect directly.

Installing a firmware update will not rename the device or change its IP address setting.