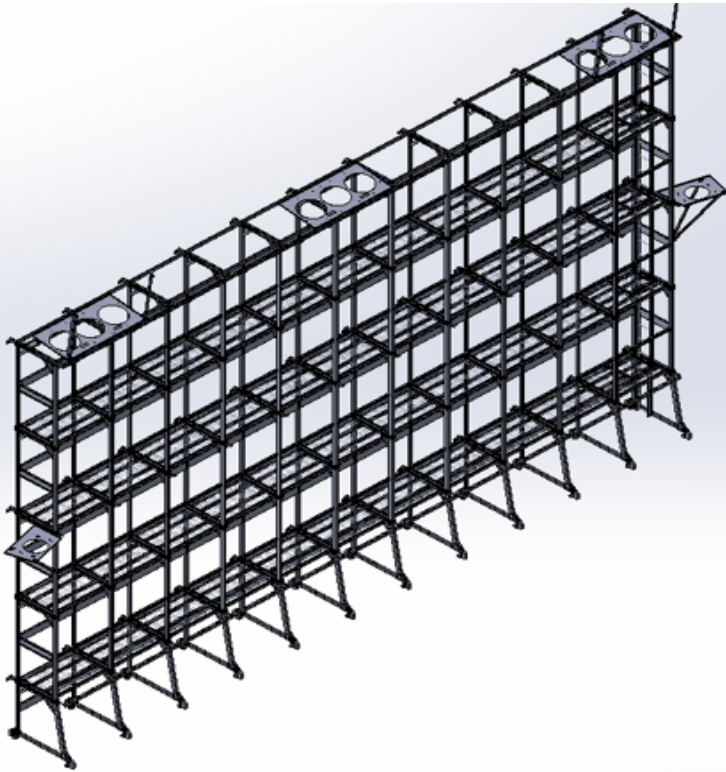




DVL Series DirectView LED Frame Support System

Standard Cinema Centric Configurations: p2.5 & p3.33



The Moving iMAGE Technologies DVL Support System provides most of the functions required for implementing DirectView LED technology, including mechanical/structural support, catwalks for service access, loudspeaker platforms, AC power distribution, and integrated low voltage LED work lighting. The MIT DVL has been designed in collaboration with Samsung, specifically to work with the **SAMSUNG Onyx Cinema** LED panels. The frame is customizable to accommodate other DCI Certified LED cinema systems.

The frame consists of a bottom section that elevates the screen off the floor as needed for sightlines. Upper sections correspond to the pitch of the LED panels.

Installation of the MIT DVL system requires bracing to a heavy load-bearing wall at the front of the

room to provide lateral stability. If an appropriate load-bearing wall at the front isn't available, an additional stabilizing kit is required. Other optional kits are available to mount screen masking/drapery, sound baffles/bafflettes around speakers and additional stabilizing components for active seismic sites.

FEATURES

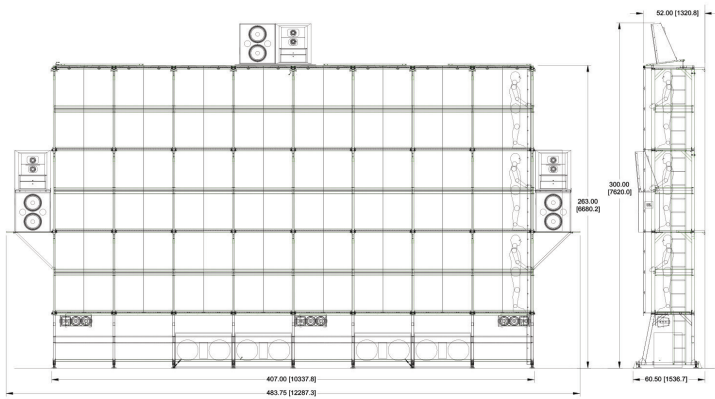
- Welded steel modular construction supports multiple LED configurations
- Adjustable heavy-duty leveling feet for easy leveling
- Proprietary truing system for fast alignment
- Proprietary support beams for LEDs minimize stress on panels
- Open-mesh catwalk platforms do not impede fire sprinklers
- Permanent ladder, safety railings & fall-arrest system integrated into frame design
- Speaker mounts support top, side, and under speaker mounting
- Speaker layout options conform to all major immersive sound formats for cinemas
- AC power distribution components supplied with the system
- Low voltage lighting system supplied with the system
- Design carries Structural Engineer stamp



MOVING IMAGE TECHNOLOGIES
YOUR DIGITAL CINEMA EXPERTS

** Due to ongoing development, features and specifications subject to change without notice.*

STANDARD CINEMA CENTRIC CONFIGURATIONS



p2.5, 34ft [10m] Wide

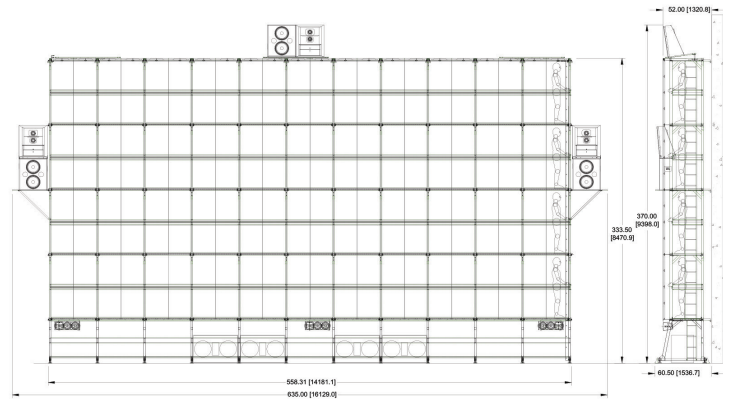
Specifications:

Description: 9 uprights, 3 catwalk levels, 96 LED panels

Dead Load, Frame, LED, & Speakers: 8000 lb [3600 kg]

Floor Load: 50 lb / Sq. Ft Avg.

Power Requirements: 200-230VAC, 20 AMPS, x 4 circuits



p3.33, 45ft [14m] Wide

Specifications:

Description: 12 uprights, 4 catwalk levels, 176 LED panels

Dead Load, Frame, LED, & Speakers: 14,000 lb [6350 kg]

Floor Load: 70 lb / Sq. Ft Avg.

Power Requirements: 200-230VAC, 20 AMPS, x 8 circuits

PART NUMBERS

Part Number

A000510-048	DVL Frame System, 2.5p 34'/10m-48" sightline
A000510-054	DVL Frame System, 2.5p 34'/10m-54" sightline
A000510-060	DVL Frame System, 2.5p 34'/10m-60" sightline
A000514-048	DVL Frame System, 3.33p 45'/14m-48" sightline
A000514-054	DVL Frame System, 3.33p 45'/14m-54" sightline
A000514-060	DVL Frame System, 3.33p 45'/14m-60" sightline
A000514-072	DVL Frame System, 3.33p 45'/14m-72" sightline

*NOTE: All systems above include frame, electrical kit, and work lights. LEDs and Audio components purchased separately. All installations will require review and approval of Structural Engineer. Sizes shown based on DCI container of 4096 x 2160 pixels.

OPTIONS & ACCESSORIES

A000515-010	Drape Support Kit-10m
A000515-014	Drape Support Kit-14m
A000516-010	Speaker Baffle Mounting Kit-10m
A000516-014	Speaker Baffle Mounting Kit-14m
TBD	Freestanding Stabilizing Kit
TBD	Seismic Zone Stabilizing Kit
A000400-040	Hush Rack (40RU)
A000400-027	Hush Rack (27RU)
A000304-001	IS-20D Power Manager

* Due to ongoing development, features and specifications subject to change without notice.



MOVING IMAGE TECHNOLOGIES
YOUR DIGITAL CINEMA EXPERTS